

In many cases you will need to integrate Quask FormArtist WorkFlow solutions with your own systems in order to provide a seamless overall experience for your users.

Common Integration Scenarios

- Database table lookups.
- Populating ordinary and drop-down list boxes during form load or during form completion.
- Real-time pre-loading of data from your own databases into forms.
- Intercepting submitted form data in real-time for processing and passing back to other systems.
- Accounting and ERP integration (supplier, customer lookups, purchase order data, etc.)

Methods of Integration

There are four different ways of integrating with your applications:

- **Lookups** – ODBC or Active Directory
- **Quask Triggers** – hooking your components into the Form Server in real-time.
- **API** – used within the triggers or in your own asynchronous applications.
- **Database** – extract data from the Quask database using ODBC or similar connections.

Lookups

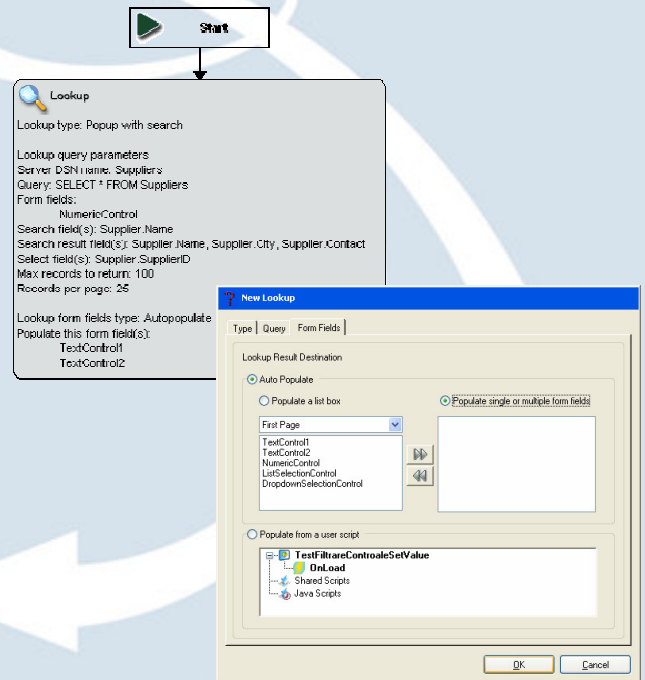
Many forms require that the user performs a lookup from a list. In many of these cases, the data source for the lookup can contain more data than is sensibly built into a list box. Quask provides comprehensive support for all types of lookups.

Visual Scripting - No Programming

Quask's Visual Scripting provides a lookup command that enables a user to perform any common type of lookup. This works by enabling the form to talk to the Quask Form Server, which then performs an ODBC lookup in a pop-up window.

Data that is returned is populated into single or multiple fields.

Custom Lookups



If the regular lookup approach does not give you enough flexibility to adequately perform your search then you can write your own lookup component which will appear to the form respondent in a pop-up browser. You can also pass parameters into your custom lookup.

QTY	CODE	DESCRIPTION - SINGLE COSTS	Price Per Unit	Total Price
3	1022	Oustaf's Knäckebröd	21.0000	63
6	1023	Turnbröd	9.0000	54
2	1045	Rogede städ	9.5000	19
20	1046	Spegesöd	12.0000	240

Subtotal: 376
Delivery Charges: 12.55
Total (excluding VAT): 388.55

The respondent can perform a Vendor lookup by clicking a button or icon. The lookup window will then appear. Once an item has been selected from the lookup, form fields can be populated automatically.

Preloading Data Fields

Another common requirement for more advanced forms is the need to populate certain form fields with data that is maintained in a server database table. This has the advantage of ensuring that information is up-to-date without having to make form changes.

Lists and text fields are most commonly populated in this fashion but other fields can also be prepopulated.

Preloading is easily achieved using the simple *Preload* Visual Scripting command. However, for more advanced applications requiring integration with more complex systems and APIs, writing a Preloading Trigger Component offers complete control without being highly complex.

Quask Triggers

Event Triggers allow integrators and developers to hook into form events. Triggers can be written in:

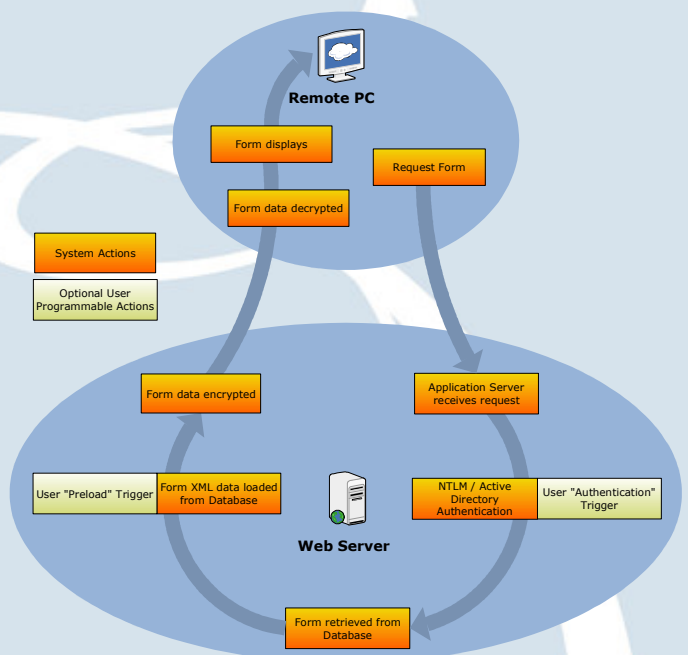
- .NET (VB.Net or C#)
- JavaScript
- VBScript
- COM Object

The following Trigger Events are available:

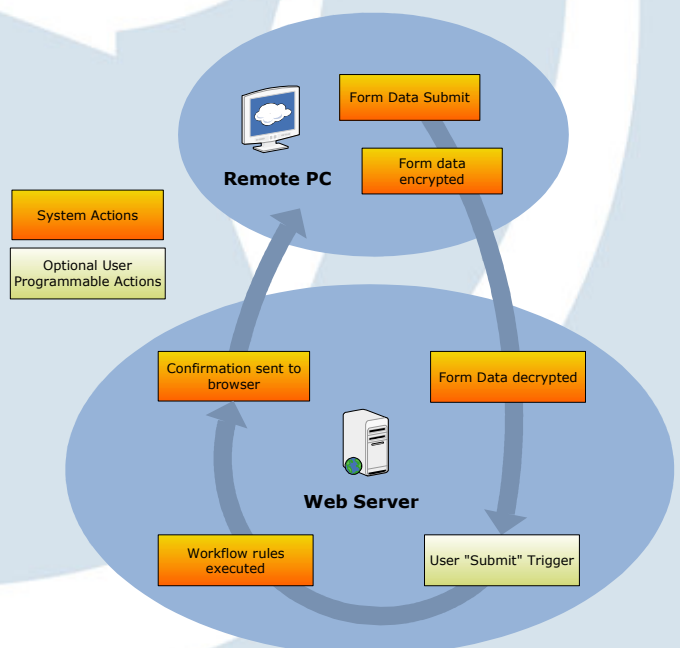
- **Form Deploy**—called each time a form is deployed. Using this event, you could add summary form information to your own systems.
- **Form Request**—to manage your own authentication and access to forms.
- **Form Preload**—allows you to put data from your system into specific form fields. Your component can populate an XML structure with any relevant field data. When the form loads, these fields will be pre-populated into hidden, read-only or regular fields.
- **Form Submit**—intercept data as it is submitted and store it in your database. This is the most commonly used form event.
- **Form Recall**—this is called whenever a form is recalled from the server.

Quask provides comprehensive source code samples and complete .Net project files that can be used as the basis for your own trigger components.

Accessing a Form—Flow



Submitting Form Data—Flow



Data Tables

XML Data Table

The system database has a single table that stores data in XML format for all forms. Whilst we would recommend the user of the API to access data stored in this table, there may be cases where it makes sense to operate directly on this XML data.

Regular Table

The system can optionally create a dedicated data table for each form. Your application can then read data from this table. You can configure 3rd party tools (for reporting etc.) to use this table.

System API

The API allows you to access all system data such as:

- Forms
- Form Fields
- Response Data
- User Information

This allows you to get or set data from any response as you need it. Using this approach you can programmatically update form fields from your own application.

Along with the API documentation, we also provide extensive source code examples and compilable .Net projects that can be used as a basis for building your own components. Our solutions can integrate with most modern software applications and databases.

Integration Services

Quask can develop specific functionality or complete solutions including form and workflow design. If you would like more information on our integration services, please contact sales@quask.com